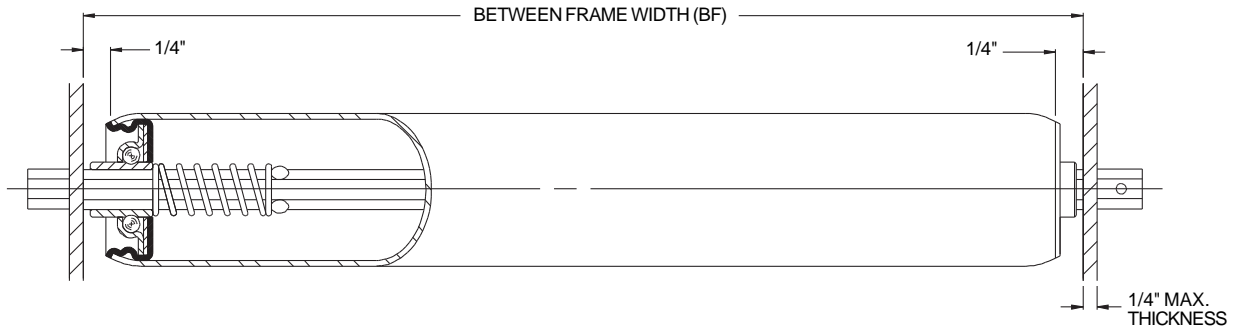


## Roller 1 3/8 in. O.D. x 18 ga. - 5/16 in. Hex Axle



**Description:**

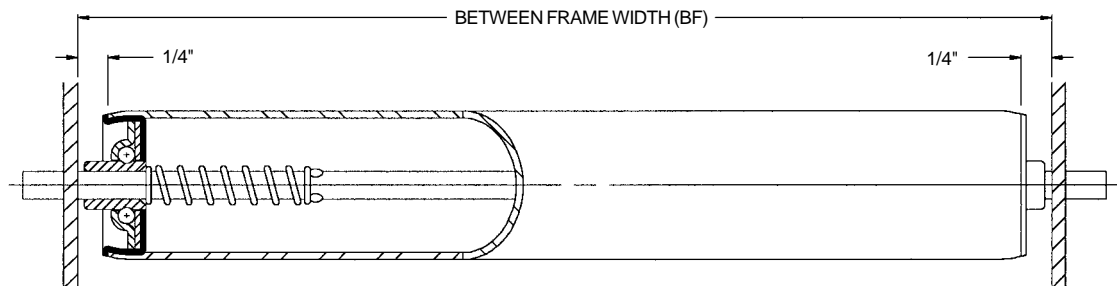
- Tube:** 1 3/8 in. O.D. x 18 ga. (.049 in.) Galvanized
- Axle:** 5/16 in. Hex
- Bearing No.:** 102228 - Plain
- Spring No.:** 11372
- Pin No.:** 101136
- Weight (lbs.):**  $0.13 + 0.07 \times \text{BF}$
- Option:** Grooved Roller

Roller No.	Bearing No.	Retained	BF
28740 - BF	102228 - Plain	Pin	4 - 28
26356 - BF	102228 - Plain	Spring	7 - 28

BF*	Bearing No. 102228	BF*	Bearing No. 102228
7	120	18	120
8	120	19	120
9	120	20	120
10	120	21	119
11	120	22	114
12	120	23	109
13	120	24	104
14	120	25	99
15	120	26	96
16	120	27	92
17	120	28	88

\* Other Between Frame Widths available. See chart at left.

## Roller 1 3/8 in. O.D. x 16 ga. - 1/4 in. Round Axle



**Description:**

- Tube:** 1 3/8 in. O.D. x 16 ga. (.065 in.)
- Axle:** 1/4 in. Round
- Bearing No.:** 111856 - Plain
- Spring No.:** 25279
- Weight (lbs.):**  $0.12 + 0.09 \times \text{BF}$
- Roller No.:** 27829 - BF
- BF Range:** 6 - 28

BF*	Bearing No. 102151	BF*	Bearing No. 102151
7	120	18	52
8	120	19	49
9	110	20	47
10	98	21	44
11	88	22	42
12	80	23	40
13	74	24	39
14	68	25	37
15	63	26	35
16	59	27	34
17	55	28	33

\* Between Frame Widths available from 6 in. to 28 in.