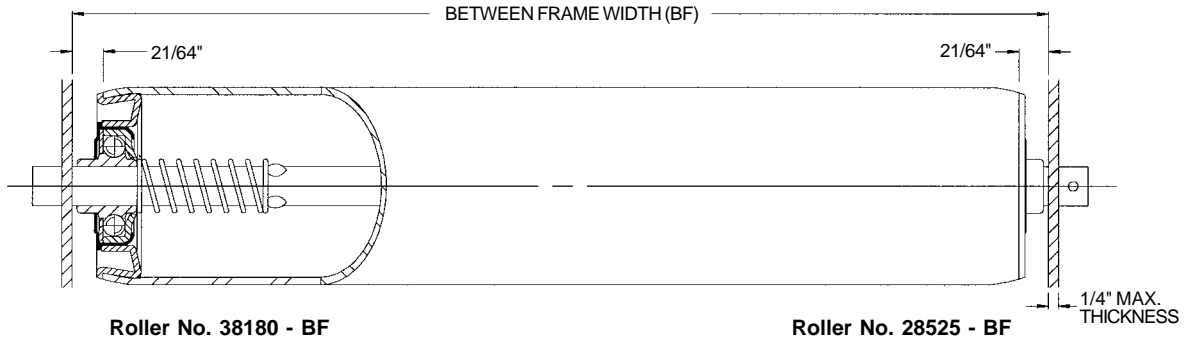


## Roller 2 1/2 in. O.D. x 14 ga. - 1/2 in. Round Axle



Roller No. 38180 - BF

Roller No. 28525 - BF

**Description:**

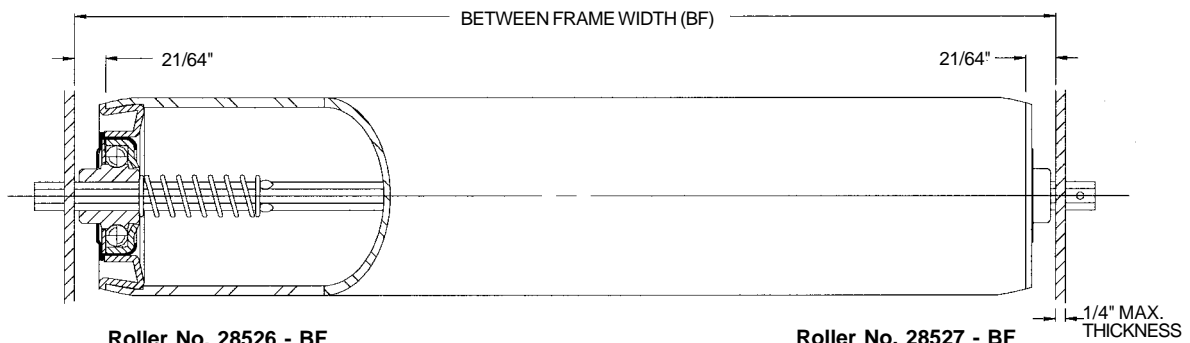
- Tube:** 2 1/2 in. O.D. x 14 ga. (.083 in.)
- Axle:** 1/2 in. Round
- Bearing Adapter No.:** 102058
- Spring No.:** 11375
- Pin No.:** 101010
- Weight (lbs.):** 0.61 + 0.26 x BF

Roller No.	Bearing No.	Retained	BF
28525 - BF	102181 - Plain	Pin	3 - 63
38180 - BF	102181 - Plain	Spring	4 - 63

BF*	Bearing No. 102181	BF*	Bearing No. 102181
7	290	37	290
10	290	40	290
13	290	43	288
16	290	46	269
19	290	49	252
22	290	52	237
25	290	55	224
28	290	58	212
31	290	61	201
34	290	63	195

\* Other Between Frame Widths available. See chart at left.

## Roller 2 1/2 in. O.D. x 11 ga. - 5/16 in. Hex Axle



Roller No. 28526 - BF

Roller No. 28527 - BF

**Description:**

- Tube:** 2 1/2 in. O.D. x 11 ga. (.120 in.)
- Axle:** 5/16 in. Hex
- Bearing Adapter No.:** 102058
- Spring No.:** 11372
- Pin No.:** 101136
- Weight (lbs.):** 0.53 + 0.28 x BF
- Option:** Galvanized Tube

Roller No.	Bearing No.	Retained	BF
28526 - BF	102145 - Plain	Spring	7 - 39
28527 - BF	102145 - Plain	Pin	4 - 39

BF*	Bearing No. 102145	BF*	Bearing No. 102145
7	275	25	94
9	275	27	87
11	226	29	80
13	188	31	75
15	161	33	70
17	141	35	66
19	125	37	63
21	113	39	59
23	102		

\* Other Between Frame Widths available. See chart at left.